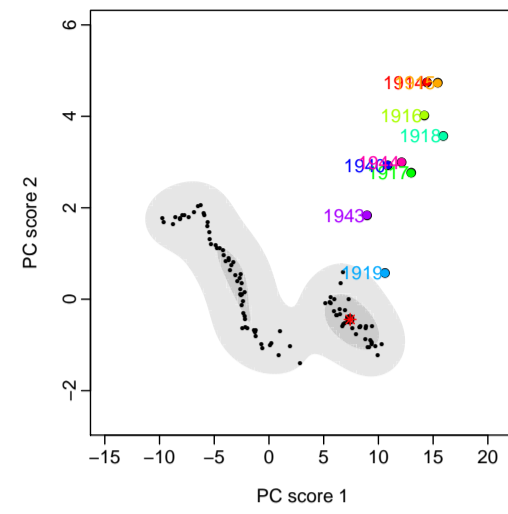
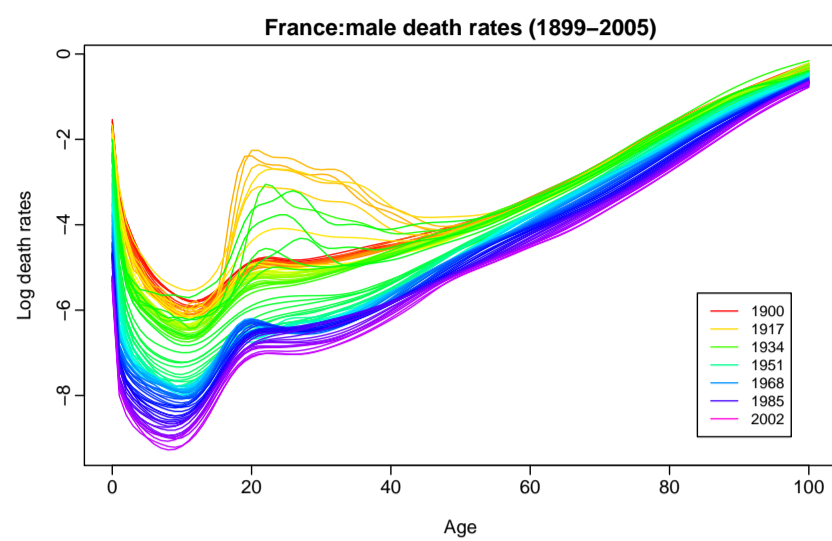




Rob J Hyndman

Research publications (2008–2010)

Forecasting functional data



Hyndman, R. J. and H. Booth (2008). Stochastic population forecasts using functional data models for mortality, fertility and migration. *International Journal of Forecasting* **24**(3), 323–342.

Hyndman, R. J. and H. L. Shang (2009). Forecasting functional time series (with discussion). *Journal of the Korean Statistical Society* **38**(3), 199–221.

Shang, H. L. and R. J. Hyndman (2009). Nonparametric time series forecasting with dynamic updating. In: *Proceedings, 18th World IMAS/MODSIM Congress*. Cairns, Australia, 13–17 July 2009.

Erbas, B., M. Akram, D. M. Gertig, D. English, J. L. Hopper, A. M. Kavanagh, and R. J. Hyndman (2010). Using functional data analysis models to estimate future time trends of age-specific breast cancer mortality for the United States and England-Wales. *Journal of Epidemiology* **20**(2), 159–165.

Hyndman, R. J. and H. L. Shang (2010). Rainbow plots, bagplots and boxplots for functional data. *Journal of Computational & Graphical Statistics* **19**(1), 29–45.

Tourism forecasting

Athanasopoulos, G. and R. J. Hyndman (2008). Modelling and forecasting Australian domestic tourism. *Tourism management* **29**(1), 19–31.

Athanasopoulos, G., R. A. Ahmed, and R. J. Hyndman (2009). Hierarchical forecasts for Australian domestic tourism. *International Journal of Forecasting* **25**(1), 146–166.

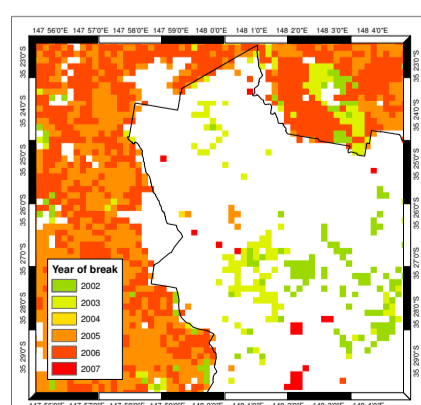
Other time series & forecasting

Hyndman, R. J. and Y. Khandakar (2008). Automatic time series forecasting: The forecast package for R. *Journal of Statistical Software* **26**(3).

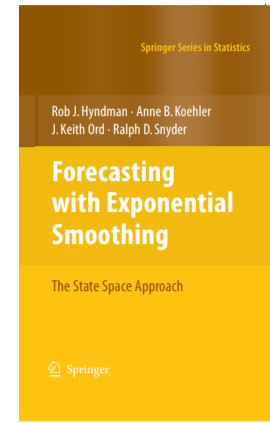
Magnano, L., J. W. Boland, and R. J. Hyndman (2008). Generation of synthetic sequences of half-hourly temperatures. *Environmetrics* **19**(8), 818–835.

Wang, X, K. A. Smith-Miles, and R. J. Hyndman (2009). Rule induction for forecasting method selection: meta-learning the characteristics of univariate time series. *Neurocomputing* **72**, 2581–2594.

Verbesselt, J., R. J. Hyndman, G. Newham, and D. Culvenor (2010). Detecting trend and seasonal changes in satellite image time series. *Remote Sensing of Environment* **114**(1), 106–115.



Exponential smoothing



Hyndman, R. J., A. B. Koehler, J. K. Ord, and R. D. Snyder (2008). *Forecasting with exponential smoothing: the state space approach*. Berlin: Springer-Verlag. www.exponentialsmoothing.net.

Gould, P., A. B. Koehler, F. Vahid-Araghi, R. D. Snyder, J. K. Ord, and R. J. Hyndman (2008). Forecasting time series with multiple seasonal patterns. *European Journal of Operational Research* **191**(1), 205–220.

Hyndman, R. J., M. Akram, and B. C. Archibald (2008). The admissible parameter space for exponential smoothing models. *Annals of the Institute of Statistical Mathematics* **60**(2), 407–426.

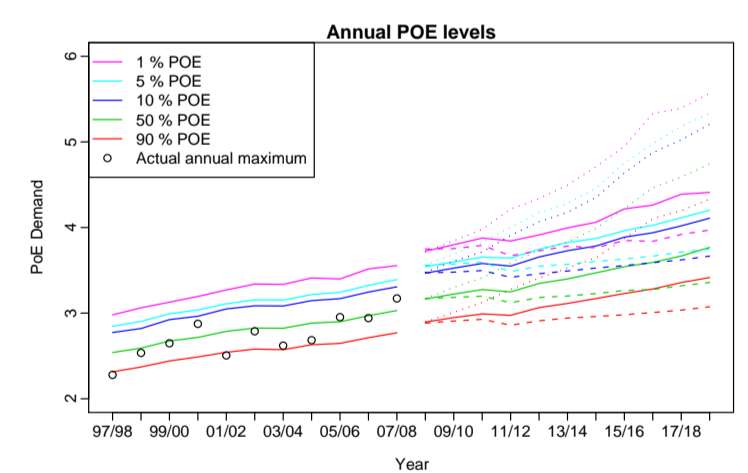
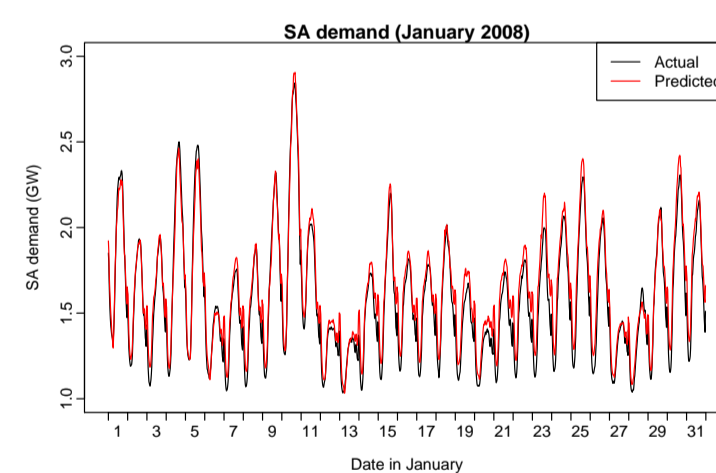
Akram, M., R. J. Hyndman, and J. K. Ord (2009). Exponential smoothing and non-negative data. *Australian & New Zealand Journal of Statistics* (4), 415–432.

Ord, J. K., A. B. Koehler, R. D. Snyder, and R. J. Hyndman (2009). Monitoring processes with changing variances. *International Journal of Forecasting* **25**(3), 518–525.

de Silva, A., R. J. Hyndman, and R. D. Snyder (2009). A multivariate innovations state space Beveridge-Nelson decomposition. *Economic modelling* **26**(5), 1067–1074.

de Silva, A., R. J. Hyndman, and R. D. Snyder (2010). The vector innovations structural time series framework: a simple approach to multivariate forecasting. *Statistical modelling*. to appear.

Electricity demand forecasting



Hyndman, R. J. and S. Fan (2010). Density forecasting for long-term peak electricity demand. *IEEE Transactions on Power Systems*. to appear.

Other applied statistics

Villanova, L., P. Falcaro, D. Carta, I. Poli, R. J. Hyndman, and K. Smith-Miles (2010). Functionalization of microarray devices: process optimization using a multiobjective PSO and multiresponse MARS modeling. In: *Proceedings. 2010 IEEE congress on evolutionary computation*, July 2010, Barcelona, Spain.